



# MONTHLY MEMBERSHIP PROGRESS REPORT

District 27 A1

Results as of: 9/30/2015

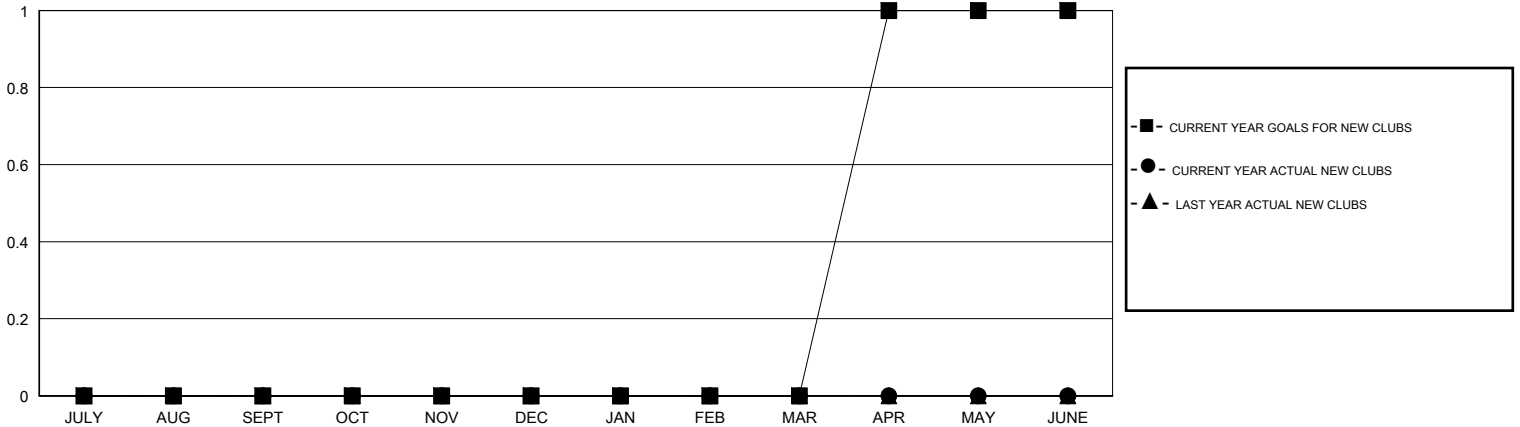
GMT: Judy Hankom

LOCATION WISCONSIN

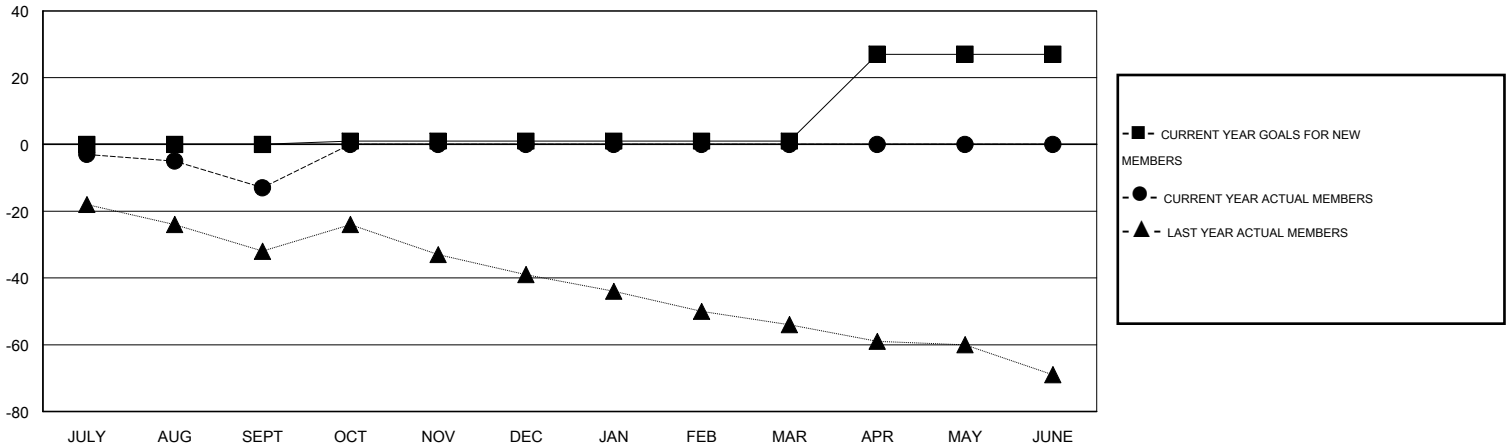
GMT CA 1

Clubs					Members				
RESULTS FOR 2015-2016					RESULTS FOR 2015-2016				
QUARTER	NEW CLUB GOAL	NEW CLUBS	DROPPED CLUBS	NET GAIN/LOSS	QUARTER	NEW MEMBER GOAL	CHARTER AND NEW MEMBERS ADDED	DROPPED MEMBERS	NET GAIN/LOSS
JULY/AUG/SEPT	0	0	0	0	JULY/AUG/SEPT	0	25	38	-13
OCT/NOV/DEC	0	0	0	0	OCT/NOV/DEC	1	0	0	0
JAN/FEB/MAR	0	0	0	0	JAN/FEB/MAR	0	0	0	0
APR/MAY/JUNE	1	0	0	0	APR/MAY/JUNE	26	0	0	0

GOALS AND ACTUAL NEW CLUBS CUMULATIVE



GOALS AND ACTUAL MEMBERS CUMULATIVE



DROPPED CLUBS: 0	16 CLUBS OF 50 ADDED 1 OR MORE NEW MEMBERS	<b>GENDER DISTRIBUTION</b>
		MALE 1,427 (83.35%)
		FEMALE 285 (16.65%)
<b>DROPPED MEMBERS</b>	<a href="#">CLICK HERE FOR HEALTH ASSESSMENT DATA</a>	FAMILY UNIT MEMBERS 226
DECEASED 5		HEAD OF HOUSEHOLD 106
CLUB CANCELLED 0		NON-HEAD OF HOUSEHOLD 120
OTHER 33		
<b>TOTAL 38</b>		